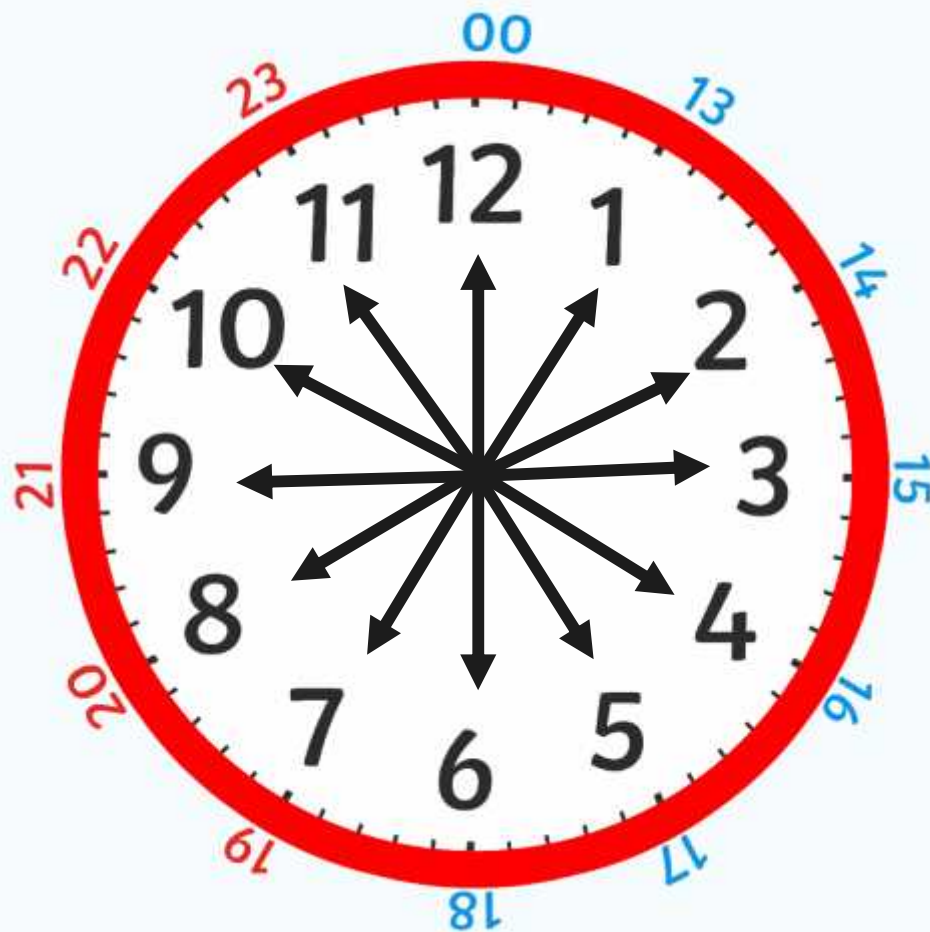


Each number on the clock represents 5 minutes. So we can count round in 5s.



On a 24 hour clock, once we get past 1pm we add 12 hours on to the time shown on the clock face.

24 Hour Digital Clocks

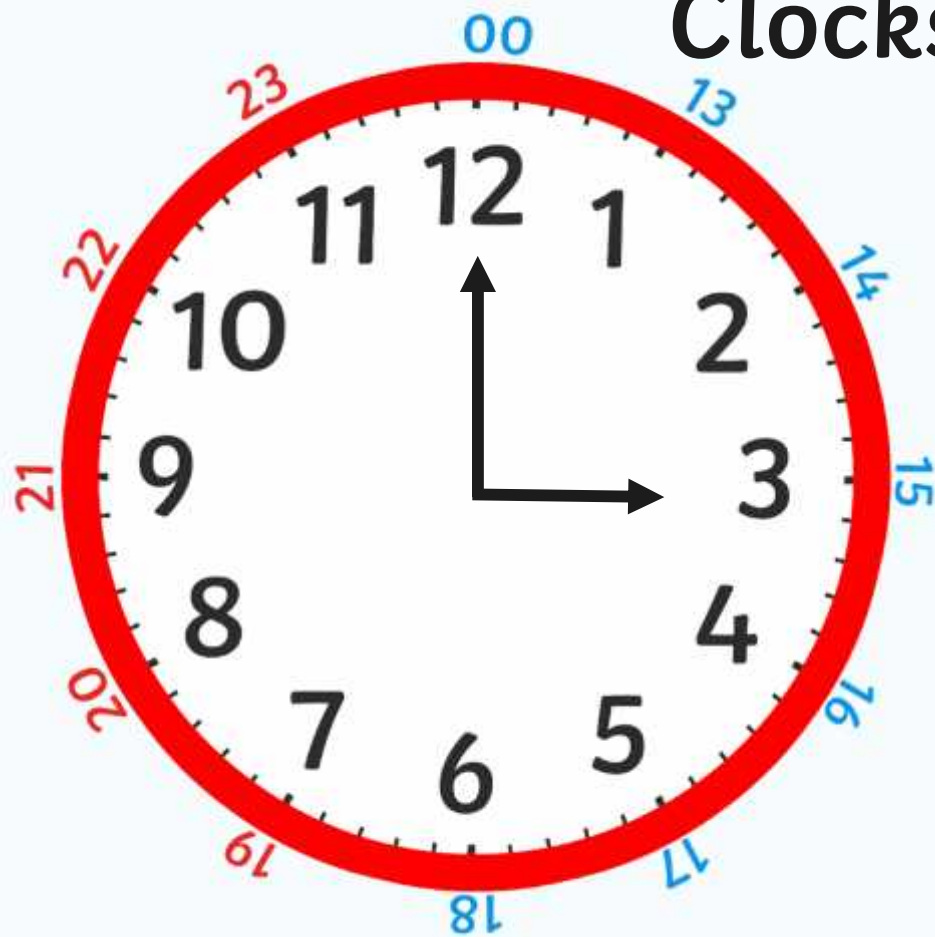


24 hour digital clocks also have an hour and minute display, separated by a colon.

The hours will always be before the colon. The hours go from 0 to 23.

The minutes will always be after the colon.

Converting From 12 to 24 Hour Clocks

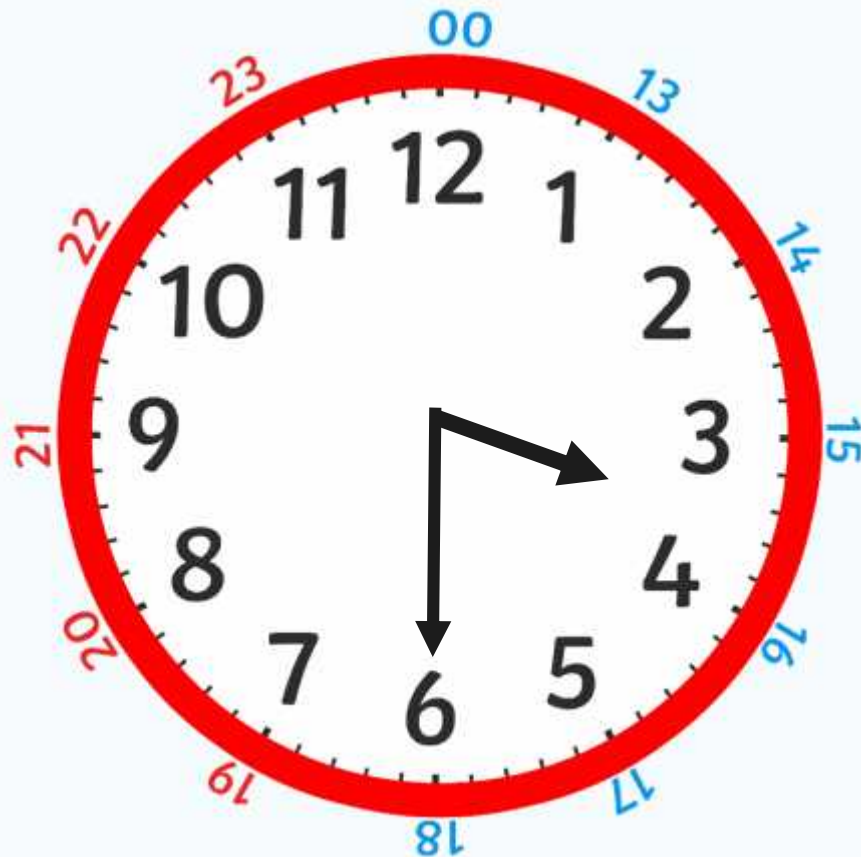


Do the clocks show the same time?

What is the same about the clocks?

What is different?

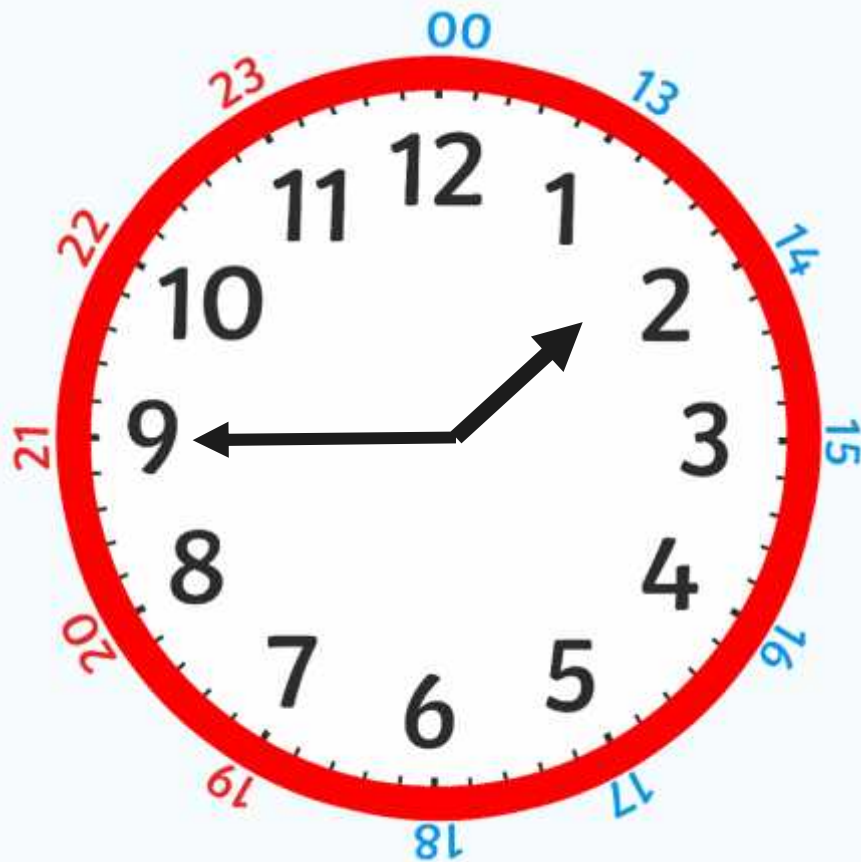
Converting From 12 to 24 Hour Clocks



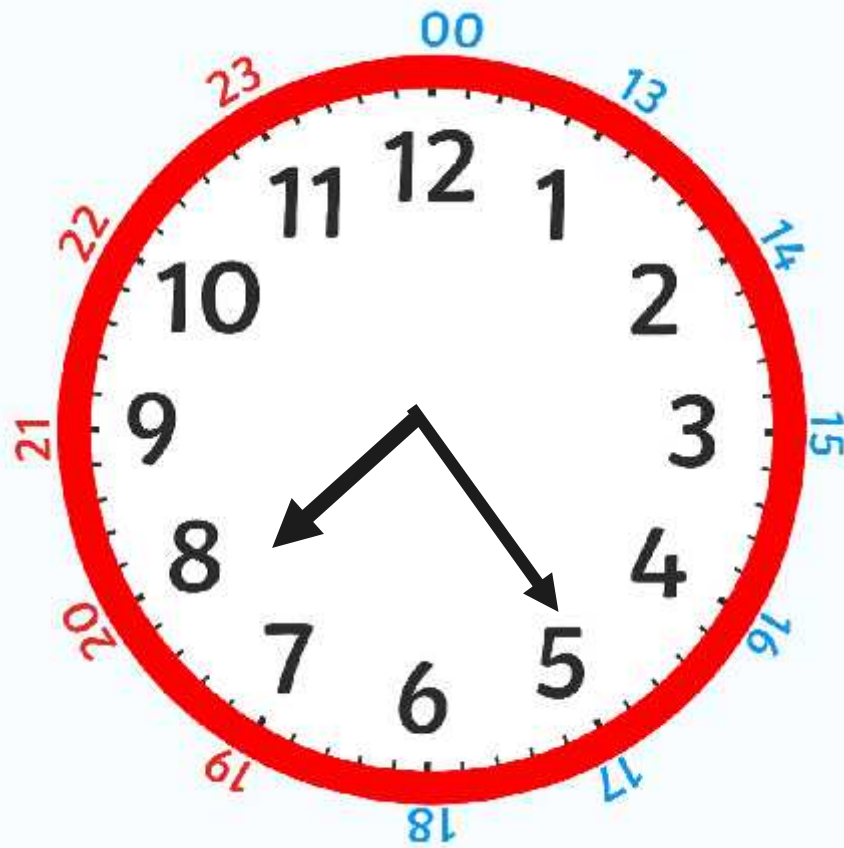
What is the digital time represented by the analogue clock?

On a 24 hour clock this could be two different times, what would they be?

Try This One



What About This One?



Feeling Confident?

